

INSTALLATION GUIDE

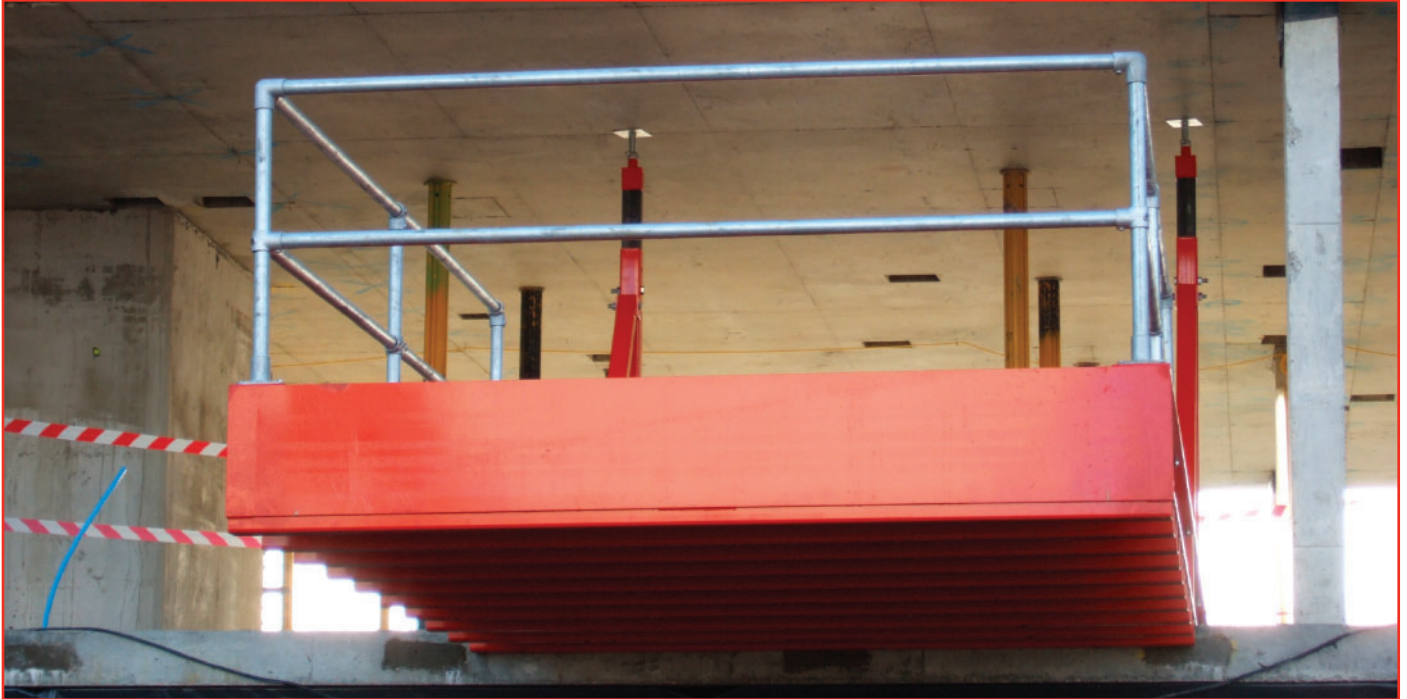


+44 (0) 844 247 1676
info@cranetechgroup.com
www.cranetechgroup.com



cranedeck

cantilever loading platforms

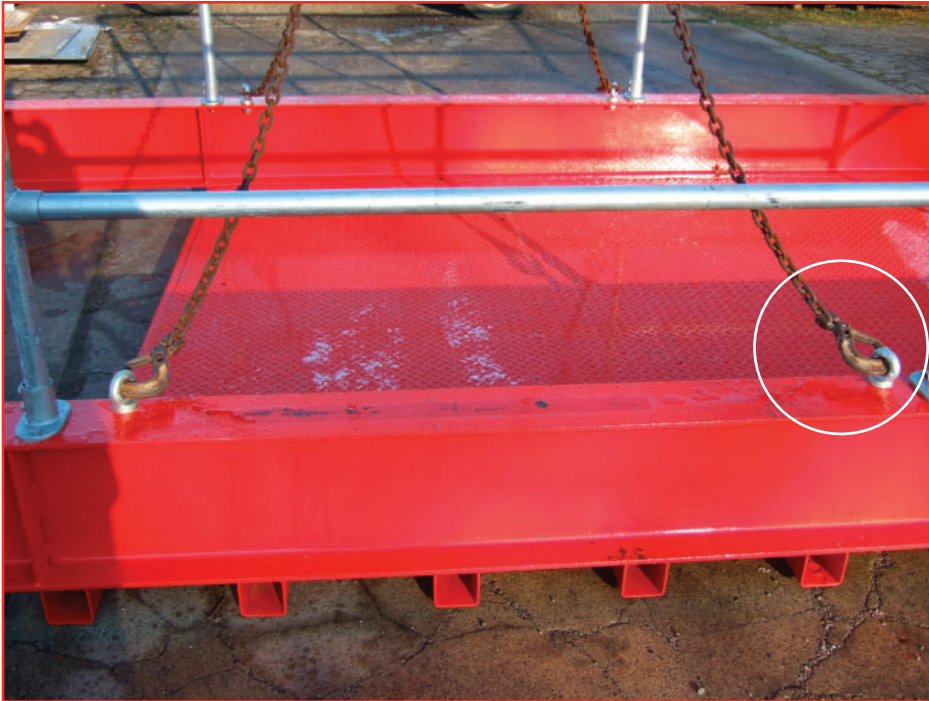


STEP 1

CRANEDECK PLATFORMS ARRIVE ON SITE. TOP ONE IS READY ASSEMBLED, BOTTOM ONE IS FLAT PACKED FOR TRANSPORT

cranedeck

cantilever loading platforms



STEP 2
ATTATCH CRANE CHAINS
TO 4 No LIFTING EYES
LOCATED ON THE TOP
FLANGE OF THE MAIN
BEAMS



STEP 3
ATTATCH TAG LINES TO
PLATFORM

cranedeck

cantilever loading platforms



STEP 4

CARRY OUT FINAL INSPECTION OF PLATFORM ENSURING ALL BOLTS ARE TIGHTENED AND THE DECK IS CLEAR OF ANY LOOSE COMPONENTS BEFORE LIFTING

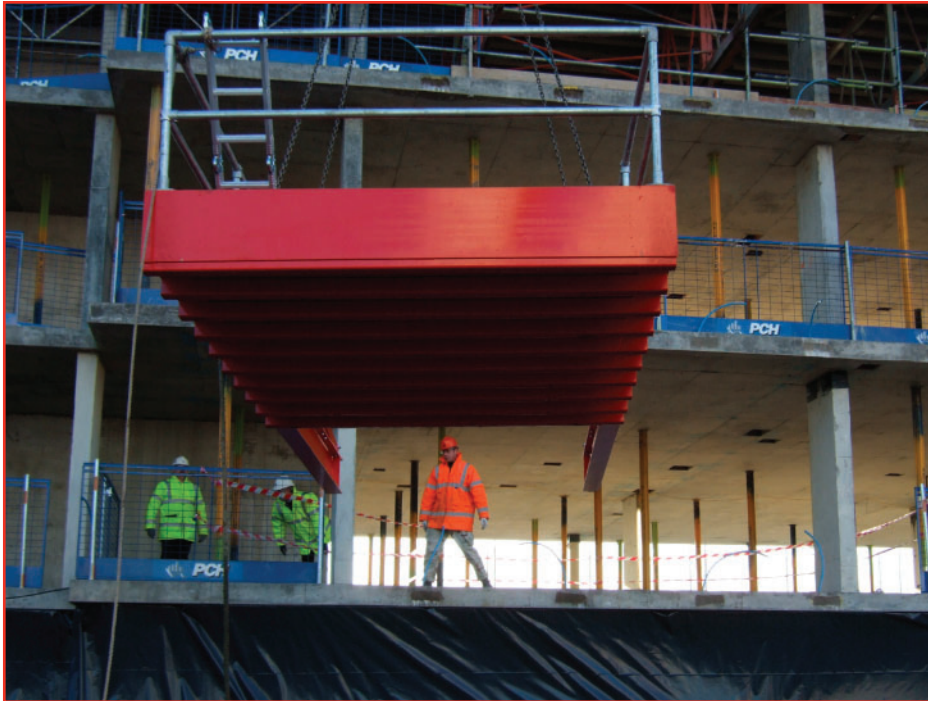


STEP 5

REMOVE EDGE PROTECTION AT INSTALLATION POSITION

cranedeck

cantilever loading platforms



STEP 6

HOIST THE PLATFORM UP TO THE INSTALLATION POSITION USING THE TAG LINE TO CONTROL THE LIFT



STEP 7

GUIDE THE PROP END OF THE PLATFORM INTO THE BUILDING

NOTE: THE PROPS CAN BE FOLDED DOWN TO AID INSERTION OF THE PLATFORM UNDER LOW CEILINGS

cranedeck

cantilever loading platforms



STEP 8

AS THE DECK AREA OF THE PLATFORM APPROACHES THE FLOOR EDGE, LOWER OFF ON THE CRANE UNTILL THE DECK IS ALMOST LEVEL WITH THE FLOOR SLAB



STEP 9

PULL THE PLATFORM INTO THE BUILDING UNTIL THE DECK IS TIGHT AGAINST THE SLAB EDGE

cranedeck

cantilever loading platforms



STEP 10

WHILST THE CRANE HOLDS THE PLATFORM STEADY, LIFT THE PROPS TO THE VERTICAL POSITION AND CONNECT THE DIAGONAL PROP BRACE USING THE M24 X 150 BOLT SUPPLIED



STEP 11

ADJUST THE HEIGHT OF THE PROP BY LIFTING THE INNER BOX TUBE UNTIL THE PROP ENGAGES THE UNDERSIDE OF THE SLAB ABOVE AND THEN SECURE USING THE M24 X 150 BOLT SUPPLIED THROUGH THE INNER AND OUTER BOX TUBES

cranedeck

cantilever loading platforms



STEP 12

FINALLY, TAKE UP ANY SLACK IN THE PROPS BY TIGHTENING THE PROP SCREW JACKS WITH A HAMMER



STEP 13

CHECK PROPS ARE PLUMB USING A SPIRIT LEVEL AND ADJUST AS NECESSARY

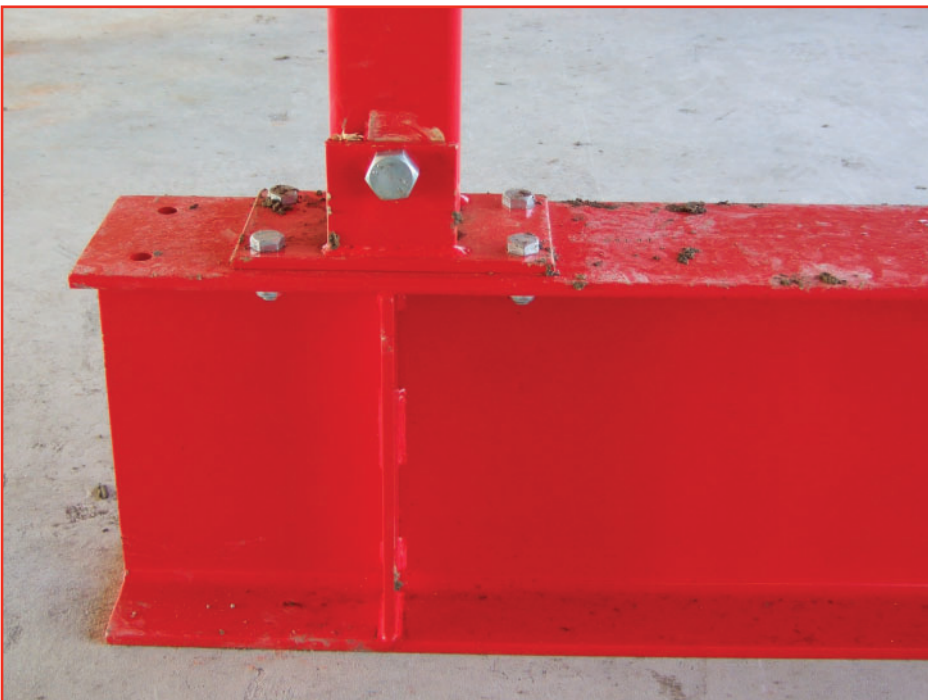
cranedeck

cantilever loading platforms



STEP 14

LOWER OFF ON THE CRANE UNTIL THE CHAINS COME LOOSE



STEP 15

FINALLY, CHECK THAT THERE IS NO GAP UNDERNEATH THE BEAMS UNDER THE PROP - **NO GAP MEANS PROPS ARE TIGHT ENOUGH!**

cranedeck

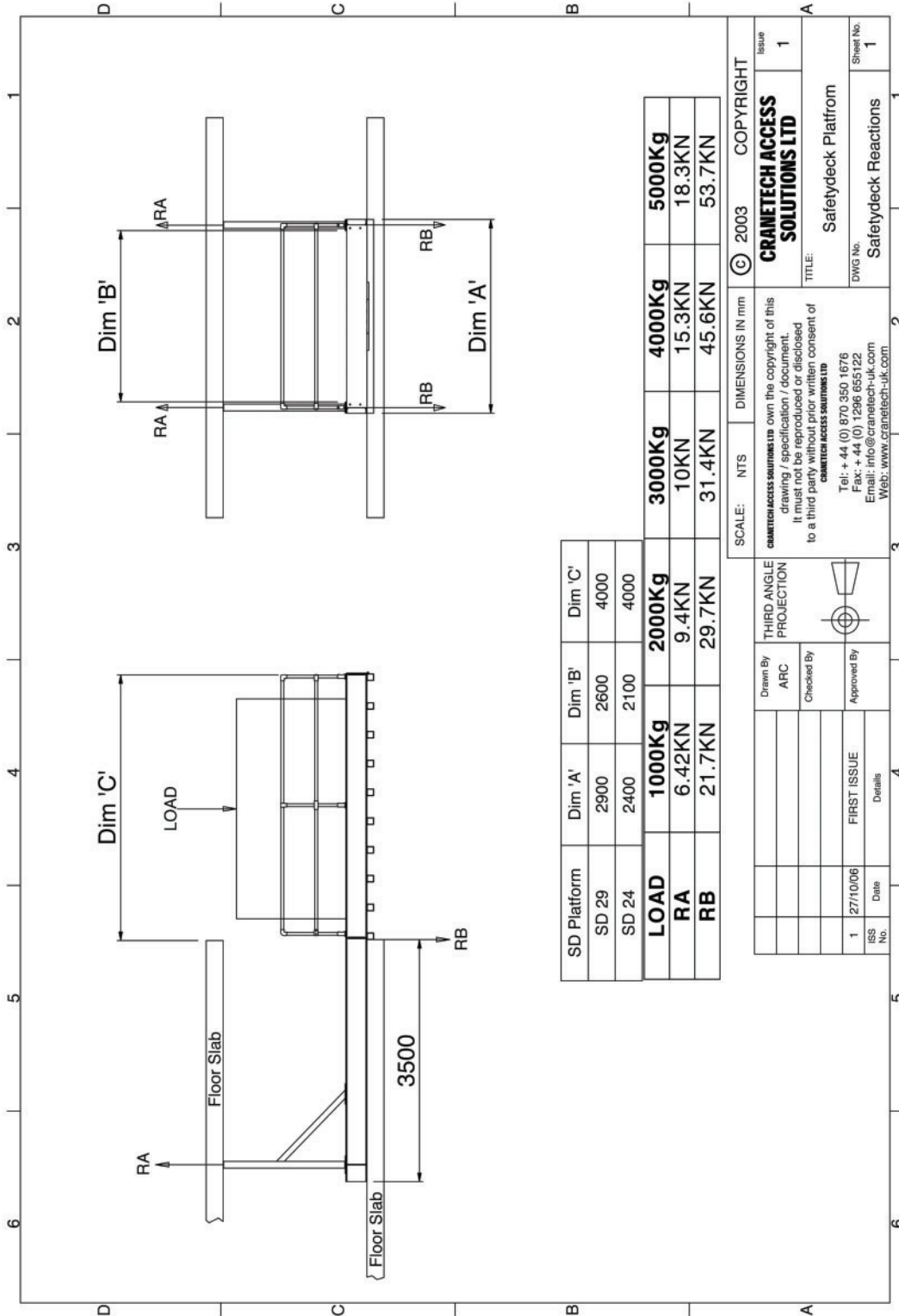
cantilever loading platforms



STEP 16
RELEASE THE CRANE
CHAINS



STEP 17
CARRY OUT FINAL
INSPECTION ENSURING THE
PROPS ARE TIGHT AND THE
CRANEDECK PLATFORM IS
NOW READY TO USE



DIMENSIONS AND REACTIONS

NOTES